

Sound Level Meter class1 NL-52

Sound Level Meter class2 NL-42



CE



# Measure Sounds Reliably

Sound Level Meter  
class1  
**NL-52**

Sound Level Meter  
class2  
**NL-42**

**Free trial  
optional programs**  
now available on  
our website



<http://rion-sv.com/>

# Extremely user friendly ! Rion's NL-52 and NL-42 sound level meters provide full support for the measurement process.

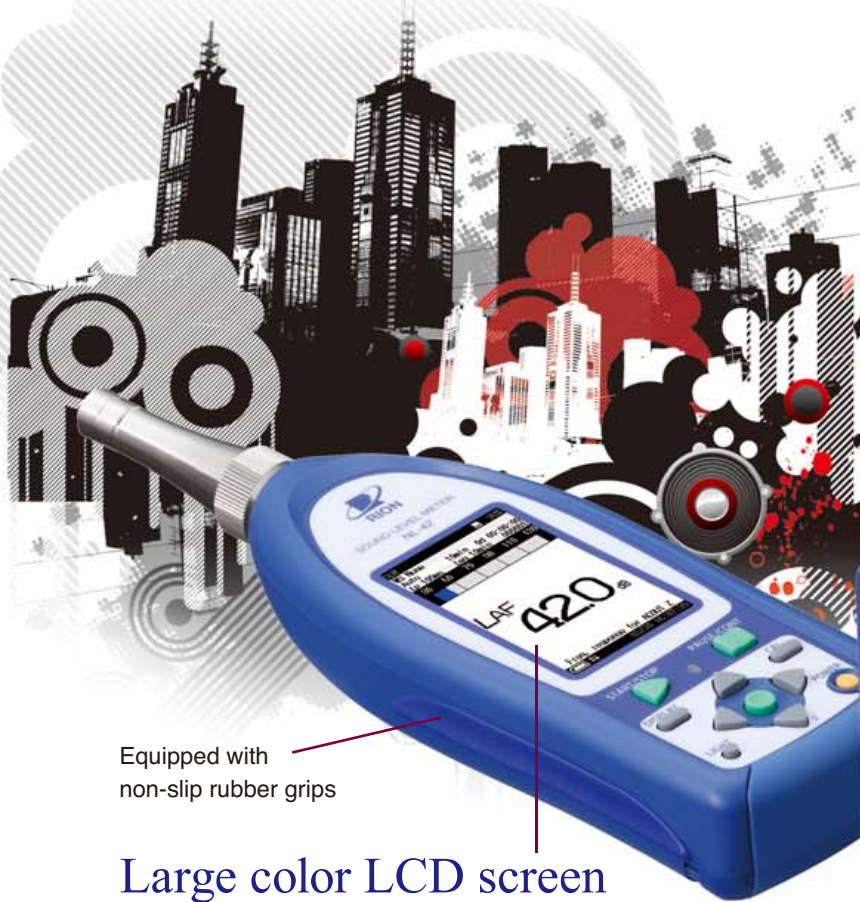
The NL-52 and NL-42 were developed to eliminate the trouble of reading instruction manuals when conducting measurements.

Large and easily viewable three-inch LCD color display.

The unit (except for the microphone) is water-resistant, which means that it is unaffected by sudden rain showers.

You can use rechargeable batteries to help cut down on waste, making this an environmentally friendly product.

250 mm  
9.85 inch



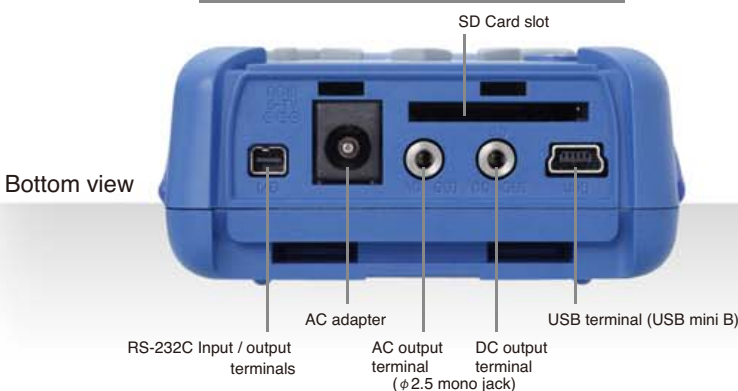
Equipped with non-slip rubber grips

## Large color LCD screen

Three-inch LCD screen with a touch panel  
High resolution screen is easy to see indoors or outdoors and even in the dark.



Variety of I/O Connections

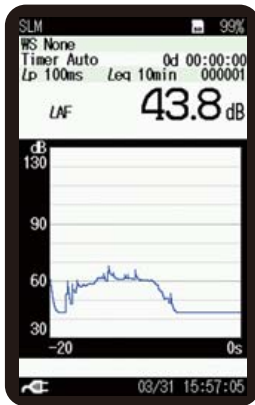


(Full scale)

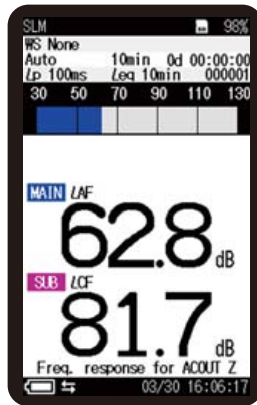


## No paper manual is needed.

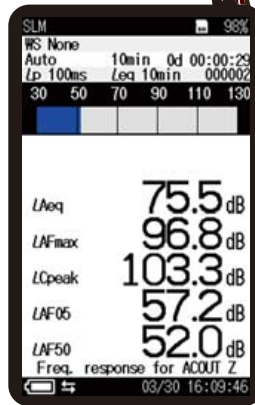
User instructions and a help function can be easily accessed on the device.



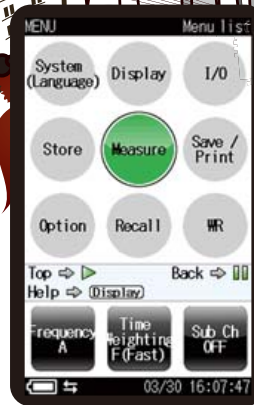
Measurement Display (Level-Time graph)



Measurement Display (Simultaneous display of Main and Sub channel)



Parameter Screen



Menu screen



Help screen

## Water-resistant (Except for the microphone)

Guaranteed water-resistant to at least level IP54 (resistant to spraying water). Helps reduce failures caused by sudden rain showers.



## Use of rechargeable batteries

In these models it is possible to use rechargeable batteries which make these meters environmentally-friendly. 24 hour continuous measurement is possible (when using eneloop® or dry alkaline batteries).



- Please use the dedicated charger to charged eneloop® batteries.
- When using eneloop batteries, please read the eneloop® battery instruction manual.
- eneloop® is a registered trademark of Panasonic group.

## Continuous detailed measurements for one month

This meter can be used to conduct long-term measurements, such as environmental measurements. (If an AC adapter is used)

Duration of recording

**NL-52/42**

1000 h (approx. one month)

Previous model

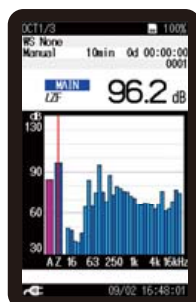
200 h (approx. one week)

Example of detailed recording

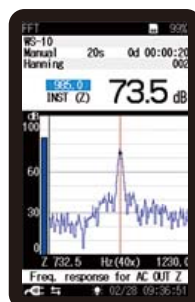
If the  $L_p$  is measured at 100 ms intervals and the  $L_{eq}$  is simultaneously measured at 10 min intervals over a 24 h period, the total size of accumulated data is approximately 74 MB (reference value)

## Functionality can be extended by a range of options

Additional functions can be added, such as simultaneous logging of raw data (100 ms  $L_p$ ) and processed data ( $L_{eq}$  and other indices), frequency analysis reverberation time measurement and long-term data recording.



1/3 octave band analysis screen



FFT analysis screen (x40)



Data management screen of AS-60 software

# Optional program function list

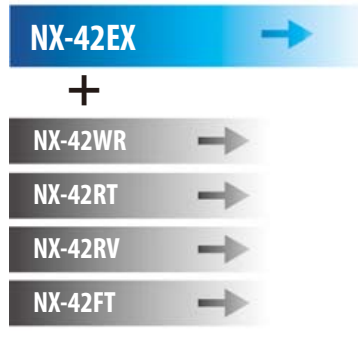
When the optional programs are installed, the following functions are added:

## Extended function program NX-42EX

The NX-42EX is supplied on the 512 MB SD card. The 512 MB SD card can be used as a memory card after installing the program.

### Prepares for other programs

When NX-42EX is installed\*, NX-42WR, NX-42RT, NX-42RV and NX-42FT can be added.



NX-42EX
Auto store function (instantaneous value, processed value)
Comparator function
Continuous data output function



Program type	NX-42WR	NX-42RT	NX-42FT	NX-42RV
Additional function				
Real sound monitor (waveform recording)	●			
Octave, 1/3 octave band analysis		●		
Octave, 1/3 octave band filter output		●		
FFT analysis			●	
Reverberation Time Measurement				●

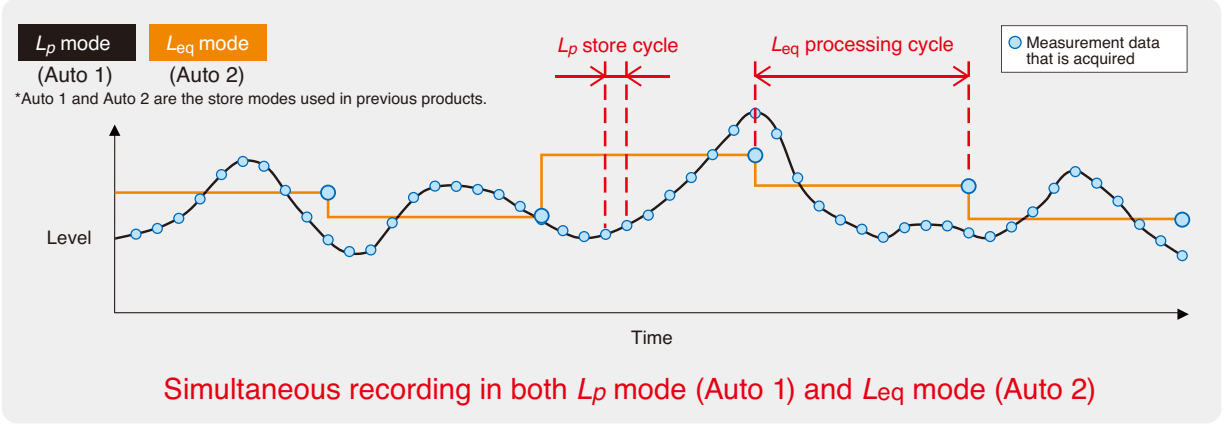
\* The NX-42EX program cannot be uninstalled.

### Auto store function

This function enables continuous measurement in  $L_p$  mode (instantaneous SPL) and  $L_{eq}$  mode (equivalent continuous SPL) to be conducted simultaneously.

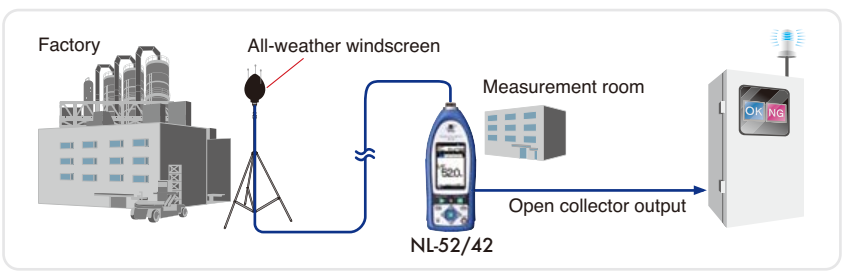
Total measuring time of Auto store function	Up to 1 000 h	Equipped with a timer function
---	---------------	--------------------------------

$L_p$  mode (instantaneous SPL) and  $L_{eq}$  mode (equivalent continuous SPL) concept



### Comparator function

This function turns on when the open collector output exceeds the set value (max. applied voltage 24 V, max. current 60 mA, allowable dissipation 300 mW).



### Continuous data output function

This function enables the continuous acquisition of instantaneous values and processed values during both USB and RS-232C communication. This is a convenient function for users who can design their own control programs, where data has to be transferred continuously from the sound level meter to the computer.

## Waveform recording program NX-42WR



The NX-42WR is supplied on the 2 GB SD card. The 2 GB SD card can be used as a memory card after installing the program.



This function enables users to record sounds and to process sound levels simultaneously. Recorded data can be played on computer and used for frequency analysis.

(Uncompressed waveform WAVE file)

Sampling at 48 kHz, 24 kHz, 12 kHz, Selection of 24 bit or 16 bit

Maximum recording time (16 bit)

Sampling frequency	Memory card	512 MB	2 GB	32 GB
48 kHz		1 h	4 h	79 h
24 kHz		2 h	9 h	158 h
12 kHz		4 h	18 h	315 h

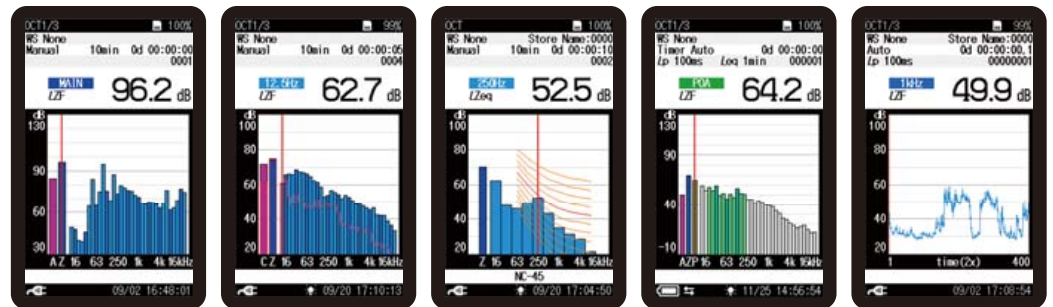
## Octave, 1/3 octave real-time analysis program NX-42RT



The NX-42RT is supplied on the 512 MB SD card. The 512 MB SD card can be used as a memory card after installing the program.



By adding the NX-42RT program to the NL-52/NL-42, octave band and 1/3 octave band analysis can be performed. Saved analysis results can be loaded and shown in an overlay graph display together with current analysis data. NC curve graph display and NC value calculation/display are also possible. Using the AS-60RT software, data can be utilized and managed on a computer.



1/3 octave band analysis screen

Overlay analysis screen

NC curve screen

Partial over all screen

Measurement screen (Level-Time graph)

## Reverberation Time Measurement Program NX-42RV



The NX-42RV is supplied on the 512 MB SD card. The 512 MB SD card can be used as a memory card after installing the program.

By adding the NX-42RV program to the NL-52/42, reverberation time measurements can be performed. The measurement method is the interrupted noise method. This program allows storage of reverberation time decay curves, T20/T30 calculation, Txx calculation (reverberation time calculation based on a user-defined interval) and averaged reverberation time results displayed on the SLM screen.



Measuring screen (graph)

Measuring screen (numeric)

Reverberation time decay curve screen

Result screen (T20/T30/Txx)

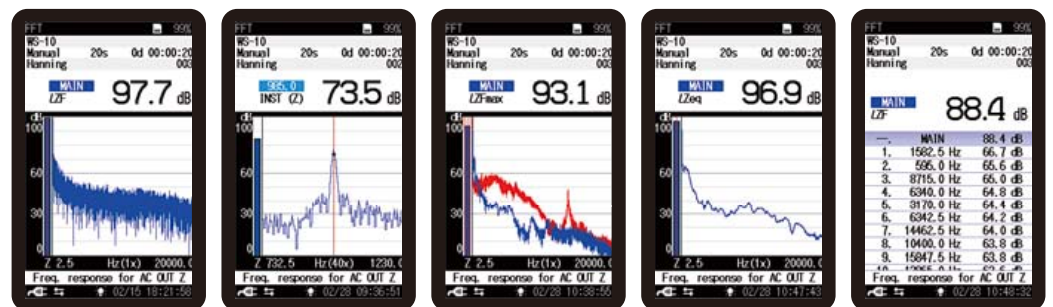
## FFT analysis program NX-42FT



The NX-42FT is supplied on the 512 MB SD card. The 512 MB SD card can be used as a memory card after installing the program.



By adding the NX-42FT program to the NL-52/NL-42, FFT analysis can be performed. The analysis frequency range is 20 kHz, with 8 000 spectrum lines (200 displayed). Saved analysis results can be loaded and shown in an overlay graph display together with current analysis data. Maximum zoom ratio is x40, and the top list screen can show up to 20 lines.



Analysis screen (x1)

Analysis screen (x40)

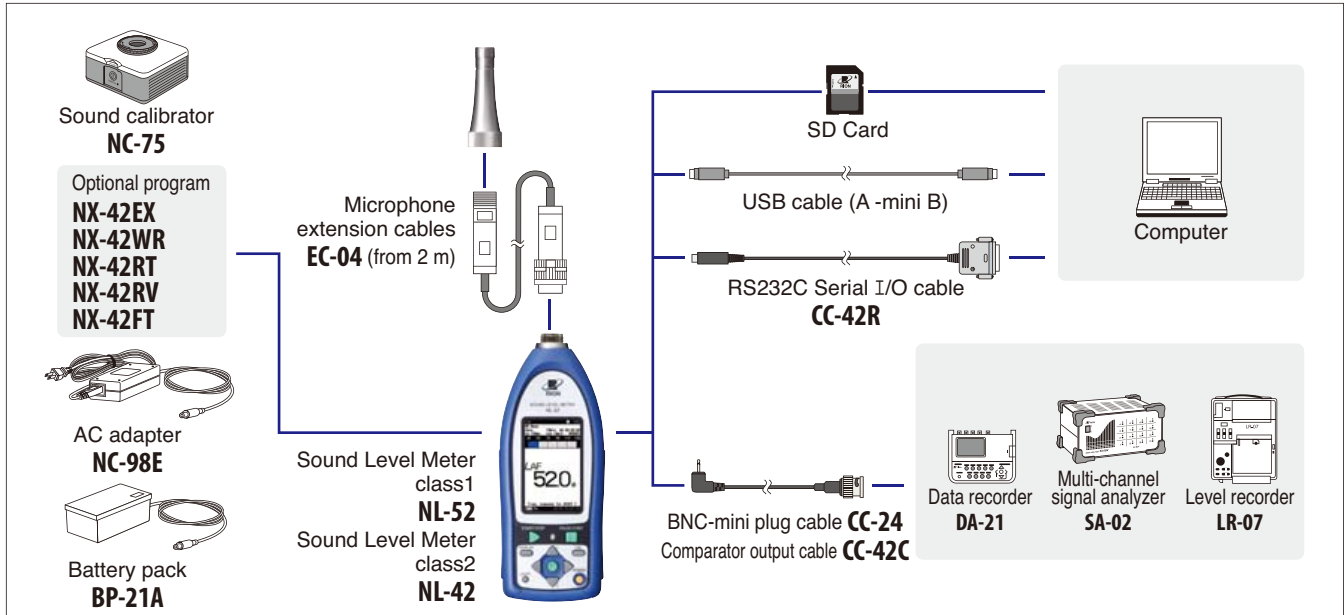
Overlay analysis screen

Linear average screen

Top list screen



## System construction



## Peripheral devices

### All-weather windscreen **WS-15**



This windscreen is designed for outdoor installations. It helps to reduce wind noise and is equipped with rainproof features that satisfy the **IPX3 water-resistant** specifications. It is used with a microphone extension cable.

(Mounting adapter WS15006 required separately)  
 (For All-weather windscreen WS-15, use of ST-81 is recommended.)

### Rain-protection windscreen **WS-16**



This screen protects the microphone against rain for a short period of time. The rainproof performance of this windscreen is designed to satisfy the **IPX3 water-resistant** specifications.

### Sound calibrator **NC-75**



This Sound calibrator conforms to IEC 60942 (JIS C 1515), class 1, providing a level of performance sufficient for calibrating the precision sound level meter.

#### Specifications

Nominal acoustic pressure level	94 dB
Nominal frequency	1 kHz

### PISTONPHONE **NC-72A**



Compliant with JIS C 1515: 2020 (IEC 60942: 2017) class LS/M, class 1/M  
 Allows calibration with accuracy of  $\pm 0.10$  dB.

#### Specifications

Nominal acoustic pressure level	114 dB
Nominal frequency	250 Hz

### Tripod **ST-80**



This stand can be used for general acoustic measurements. The sound level meter and microphone can be mounted on the stand.

## Waveform analysis software **AS-70**

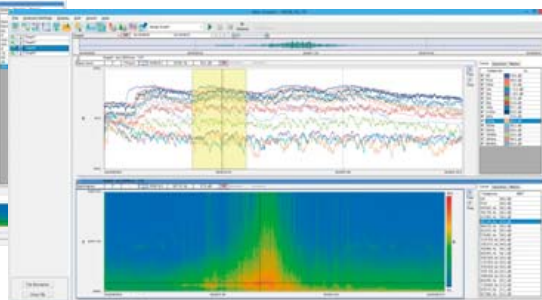
This software allows you to load stored WAVE files from a RION sound level meter, vibration meter or data recorder. Octave, 1/3 octave, and FFT analyses can then be performed. Playback of the real sound files is also possible.



Frequency analysis screen

#### Specifications

Waveform analysis	Calculations	Maximum value, Minimum value, Average value, RMS, Variance, Differential and integral calculus, HPF, LPF
Frequency weighting		Z, A, C, G, C to A, $L_v$ (vertical) (JIS C 1510), $L_h$ (horizontal) (JIS C 1510)
FFT analysis	Analysis points	32 to 65 536 points
	Display data	Power spectrum, Power spectral density, Spectrogram
Time weighting		10 ms, F, 630 ms, S, 10 s
Octave band analysis	Applicable standards	IEC 61260 Class 1 (JIS C 1514 Class 1)
	Analysis frequency	Octave band 0.5 Hz to 16 kHz (16 bands)
	range	1/3 octave band 0.4 Hz to 20 kHz (48 bands)



Frequency analysis screen

#### Recommended computer specifications

CPU	Intel Core i5 2 GHz or higher
RAM	2 GB or more (4 GB recommended)
HDD	20 GB free or more (100 GB or more recommended)
DISPLAY	XGA (1 024 × 768) or more
OS	Microsoft Windows 8.1 Pro 64 bit, 10 Pro 64 bit

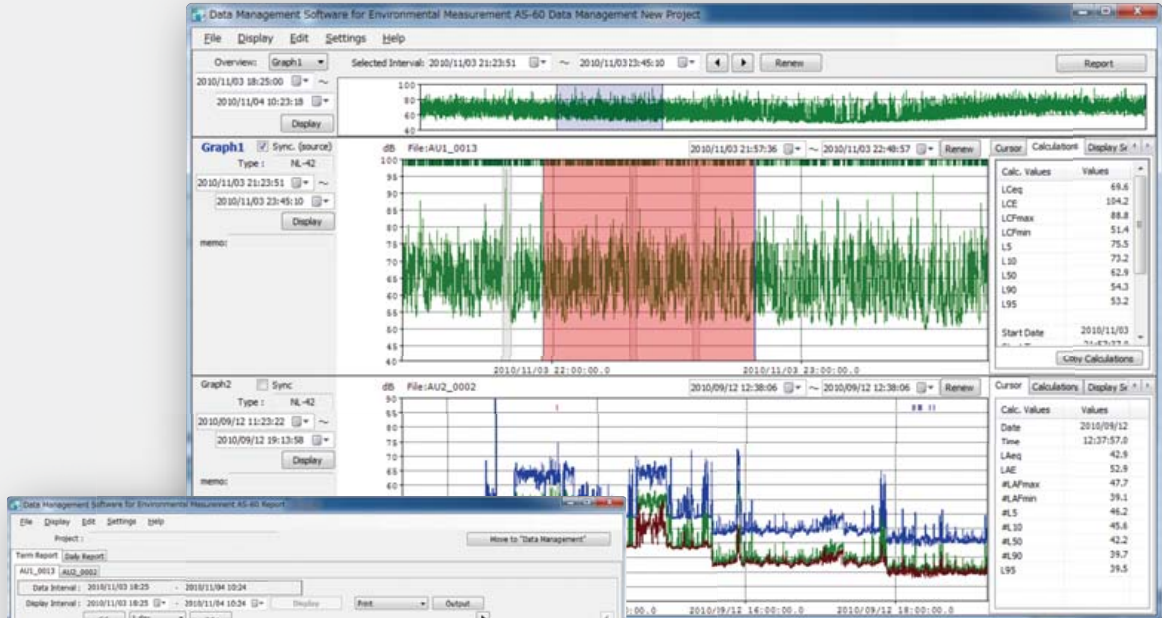
# Complete software for environmental measurements



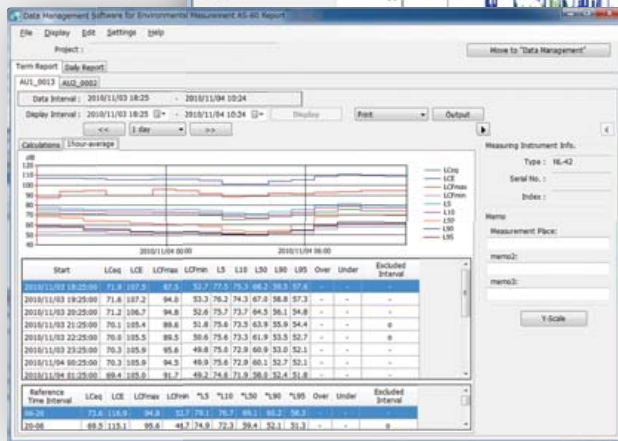
## Data management software for environmental measurement AS-60

Data management software for environmental measurement AS-60 enables the graph display of measurement data, arithmetic processing, excluded sound processing, preparation of reports, output of files, and playback of real sound files.

- Easy to use
- Reports easy to prepare
- Simultaneous display of multiple data items (up to 8 data items)
- Data stored in a data recorder can be loaded (CSV file for DA-40 Viewer)
- Data combination



Data management screen



Report preparation screen

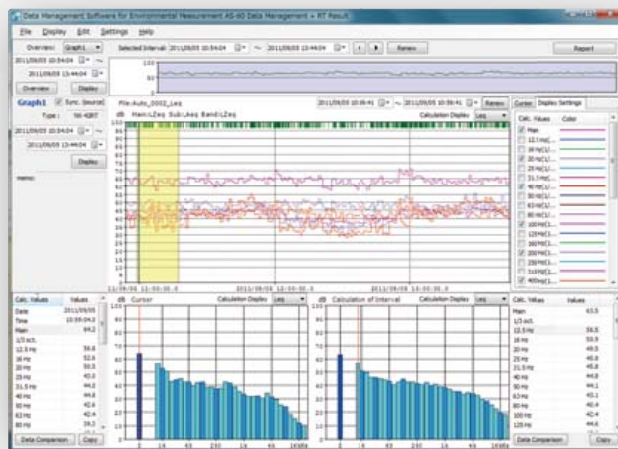
### Supported models

- NL-62\*
  - NL-52/42\*
  - NL-32/31/22/21\*
  - DA-40Viewer
- \*Only auto store data are supported.

### Recommended computer specifications (Common for AS-60/60RT/60VM)

- CPU Intel Core i5 2 GHz or higher
  - RAM 2 GB or more (4 GB or more recommended)
  - DISPLAY XGA (1024 x 768) or more, at least 65 536 colors
  - OS Microsoft Windows 8.1 Pro 64 bit, 10 Pro 64 bit
- If AS-60/60RT/60VM is used for NL-52/42 data, the NX-42EX is also needed.

## Data management software for environmental measurement AS-60RT (Includes the octave and 1/3 octave data management software)



Data management screen

### Adds support for handling octave band analysis data to AS-60

AS-60RT is for managing NX-62RT/42RT or NA-28 data on a computer.

### Supported models

- SX-A1RT\*
  - NX-62RT\*
  - NX-42RT\*
  - NA-28\*
- \*Only auto store data are supported.

## Data management software for environmental measurement AS-60VM (Includes the vibration level data management software)

Adds support for handling data measured with VM-55EX/53A to AS-60

### Supported models

- VM-55EX\*
  - VM-53A\*
- \*Only auto store data are supported.

